

# Thermal Scanning System (Fever Detection)



**ATHENA**



**CREATIVE SECURITY**  
— C O M P A N Y —

# COVID-19 Pandemic

*” Virus is the new enemy:  
Health screens will be  
more accessible for the  
safety of all.”*

*“How to keep your  
facility open?”*

# The New Normal To Protect Your Employees, Customers, And Community: Monitor For Symptoms

## Screen For Fever Symptom To Prevent The Spread

### SYMPTOMS OF CORONAVIRUS DISEASE 2019

Patients with COVID-19 have experienced mild to severe respiratory illness.

Symptoms\* can include

**FEVER**



**COUGH**



\*Symptoms may appear 2-14 days after exposure.

Seek medical advice if you develop symptoms, and have been in close contact with a person known to have COVID-19 or if you live in or have recently been in an area with ongoing spread of COVID-19.

**SHORTNESS OF BREATH**



For more information: [www.cdc.gov/COVID19-symptoms](https://www.cdc.gov/COVID19-symptoms)

# Multiple Problems With Current Methods



# **Introducing Athena's Fever Detection System**

## **Improved Rapid Screening**

## **Fast and Frictionless**

**Built for pedestrian traffic, non-contact**

## **Highly Accurate**

**Blackbody continuously calibrates**

## **Don't Need An Operator**

**System finds the face, forehead, and eye  
and sends alert, or display on screen.**

## **Automated And Easy**

**Turn-key solution, Enterprise Management**

**Not Just  
Hardware**

**An Enterprise  
Software  
Platform**

**Alerts, Centrally Manage**

**Enterprise User Management**

**Integration to Security Video  
Management System**

**Data Management, Reporting**

**Auto-Monitor that device is  
working.**

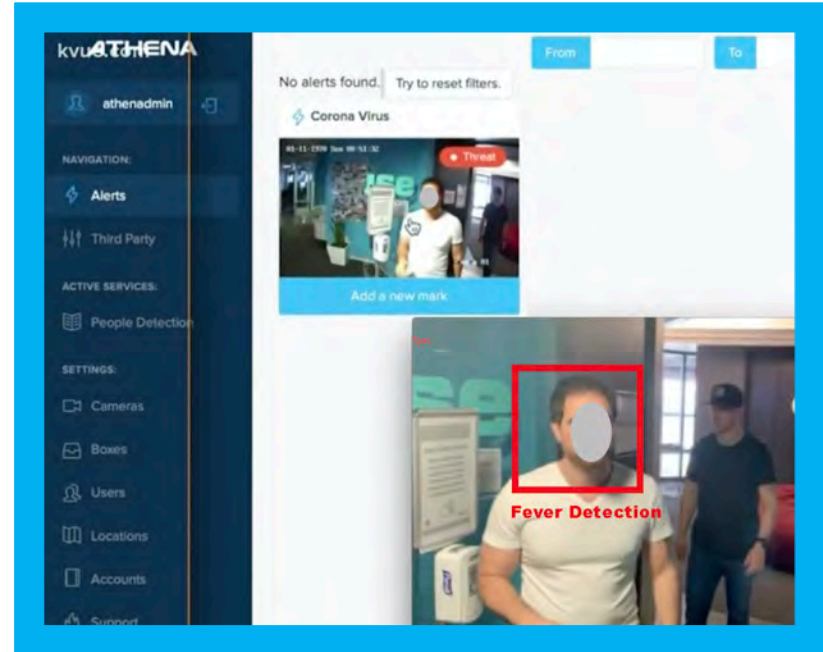
# Solutions For Every Environment






# KVUE TV In Austin, on March 22nd

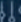
[Austin-based Company Promoting Turn-Key Fever Detection System \[link to news\]](#)






NAVIGATION:


 Alerts


 Third Party

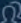
ACTIVE SERVICES:


 People Detection


SETTINGS:

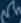
 Cameras

 Boxes

 Users

 Locations

 Accounts

 Support

 Corona Virus  CVC-1

11 hours ago

False

Can Change The Alert Thresh hold



Add a new mark

Admin panel

Camera on map

 Alarm History





## Top Features

### **Enterprise Platform**

Easy to deploy, scale devices, maintain, manage users, manage alerts, reporting, and integration options.

### **Thermal and Visual Camera Options**

Highly accurate infrared thermal cameras with blackbody device for consistent results.

### **Fast, Frictionless, Automated Screening**

System is “always on”, and auto-reboots. Staff less exposed to sick people than handheld thermometer method.

### **Fever Alarm and Enterprise Notification System**

Temperatures above the notification threshold are automatically sent to the web application and mobile application. The same username and password are used to login via either a secure web browser for the web application or mobile app.



# Fever Detection System Features

## Athena Fever Detection System

Easy to setup and operate

50 mk Sensitivity, .8 F Accuracy

Integrated Visual Camera

Turn-Key System

Alerts to Web Browser

Alerts to Mobile App

Black body version is recommend to help maintain accuracy.

## Athena Fever Detection Screening Interface

Simple user interface

Operator-free automated screen

Audible alarm notifications

Alarm notification via secure web app

Alarm notifications via mobile app

Ambient temperature compensation

Distance compensation

Verifies subject

Automatic alerts log

Historical archive, with retention or delete capability

Integrates with Security Management Systems

Integrates with Video Management Systems

# Infrared Thermal Camera Specifications, and Operating Parameters

Athena Fever Detection Camera  
Model ATH-AMDGF-14

## Specifications

Style: Bullet Camera

+ or - 0.8 F Accuracy, Infrared Thermal

Alarm in Under 1 Second

High precision temperature sensor

Under 0.2 F temperature drift

Frame Rate 30/50 Hz

384 x 288 Resolution

Working Band 8 – 14 um

Measuring Range 0 – 50 C

Output H.264 RTSP stream

Power Supply is DC9 ~ 15V

Networking: 100/1000Base Ethernet, POE

## Operating Parameters

Operating Temp 0 F to 130 F

Storage -32 F to 170 C

Humidity: Non Condensing 10 – 95%

Shell Protection IP54

Impact Resistance 25G

Vibration Resistance 2G

Installation 4 M3 thread mount holes, ¼ UNC-20

Designed for use inside, enclosed areas.

[info@creativesecurity.com](mailto:info@creativesecurity.com)

## Product Characteristics

Typically, with this type of sensor, the larger the operating temperature range, the less the accuracy is. This model's accuracy is maintained between operating temperature of 0 to 130 degrees F and should cover typical indoor use.

The camera will self adjust according to ambient temperature. When setting up or moving the camera from one environment to another, allow ten minutes for the internal components of the camera to reach the new environments temperature.

This model's accuracy of 0.8 F is much higher and better than industrial purposed infrared cameras that typically are no better than a + or – of 4.0 degrees F.

Configurable alarm temperature threshold, recommended for 38 C, which is 100.4 F.

## Appropriate Scenarios

Create a choke point, and have instructions for persons coming through this pre-screening zone to remove head ware and eyewear. Hats and glasses can cause inaccurate measurements. Hundreds can be scanned per hour, per unit, with a max of a 1,500 per hour, per unit.

Hospital  
Surgery Center  
Pharmacy  
Grocery  
Critical Infrastructure  
Bank  
Metro  
Private Company  
Airport  
Transit Centers  
Borders  
Schools  
Critical Government Buildings  
Bars  
Venues  
Restaurants

[info@creativesecurity.com](mailto:info@creativesecurity.com)

## **The World Has Changed**

We need to act now to protect the most vulnerable.

*Early detection and quarantining  
people will save lives.*

---

*We have a duty to use cutting edge  
technology to save lives.*

**Start  
Screening  
Now**



# COVID-19 Pandemic Guidance

## Guidance on preparing your workplace



## Guidance on COVID-19 Symptoms

